

SSD Insights Q1/11: The Year of SAS

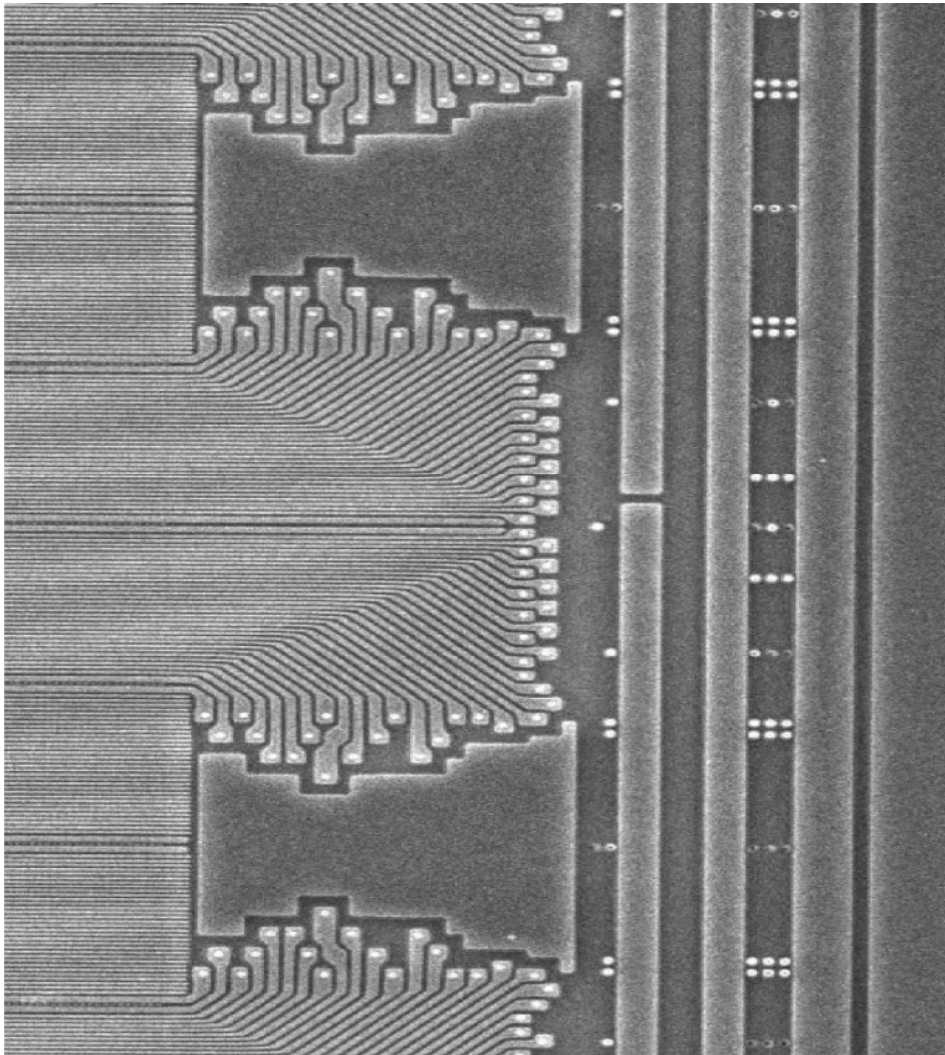
Gregory Wong, Principal Analyst
greg@forward-insights.com

March 2011



Agenda

- Vendor Status
- Marvell HyperDuo Controller
- SAS & FC Match UP
- Small FF HDD
- Q1/11 vs. Q4/10 Forecast
- SSD Forecast
 - Revenues
 - Units
 - Capacity
 - Pricing
- Summary



***Market and Technical
Intelligence for
Semiconductor Memories,
Emerging Memory
Technologies and Solid
State Storage***

FORWARD
INSIGHTS
Forward Thinking

www.forward-insights.com

March 2011

FORWARD
INSIGHTS

32