

SSD Insights Q1/15: Bigger and Bigger

Gregory Wong, Principal Analyst
greg@forward-insights.com

March 2015



For internal use only

Agenda

- Computing SSD Quarterly Trend
- Q4/14 SSD Revenues by Supplier
- Computing SSD Revenue Forecast
- Computing SSD Unit Forecast
- Computing Petabyte Forecast
- TLC SSD Forecast
- SSD Market by Technology

Agenda

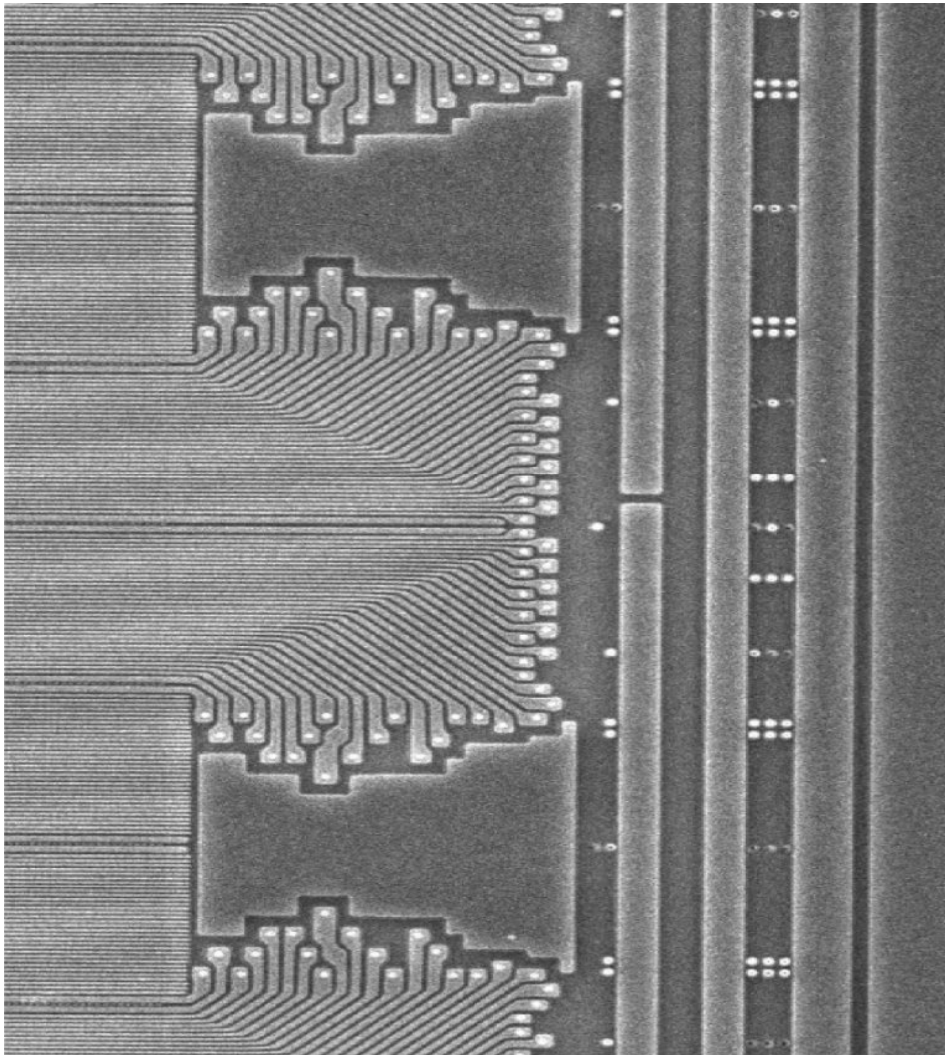
- Client SSDs
 - Q4/14 Client SSD Revenues by Supplier
 - Notebook SSD Forecast
 - Average SSD Capacity
 - Client SSD Pricing
 - Tablet SSD Forecast
 - Client SSD Market by Technology
 - Client SSD Interface Trend

Agenda

- Enterprise SSDs
 - Q4/14 Enterprise SSD Revenues by Supplier
 - Captive Datacenter SSD
 - Enterprise SSD Revenue Forecast
 - Enterprise SSD by Form Factor
 - Enterprise SSD Unit Forecast
 - Aggregate Enterprise \$/GB
 - Enterprise SSD by Technology

Agenda

- Enterprise SSDs
 - Average Enterprise SSD (User) Capacity
 - Enterprise SATA SSD Capacity Trend
 - PCIe SSD Forecast
 - Enterprise \$/GB Forecast
 - Storage-attached SSD Forecast
 - SAS SSD Capacity Trend
- Summary



***Market and Technical
Intelligence for
Semiconductor Memories,
Emerging Memory
Technologies and Solid
State Storage***



www.forward-insights.com