

SSD Insights Q2/15: Slowing Down

Gregory Wong, Principal Analyst
greg@forward-insights.com

May 2015



For internal use only

This publication is for your internal corporate use only and not to be distributed to third parties without prior written consent.

© 2015 Forward Insights. All Rights Reserved. Reproduction and distribution of this publication in any form in whole or in part without prior written permission is prohibited. The information contained herein has been obtained from sources believed to be reliable. Forward Insights does not guarantee the accuracy, validity, completeness or adequacy of such information. Forward Insights will not be liable for any damages or injuries arising from the use of such information including, without limitation, errors, omissions or inadequacies in the information contained herein or for the interpretation thereof. The opinions expressed herein are subject to change without notice.

Agenda

- Computing SSD Quarterly Trend
- Q1/15 SSD Revenues by Supplier
- Computing SSD Revenue Forecast
- Computing SSD Unit Forecast
- Computing Petabyte Forecast
- TLC SSD Forecast
- SSD Market by Technology

Agenda

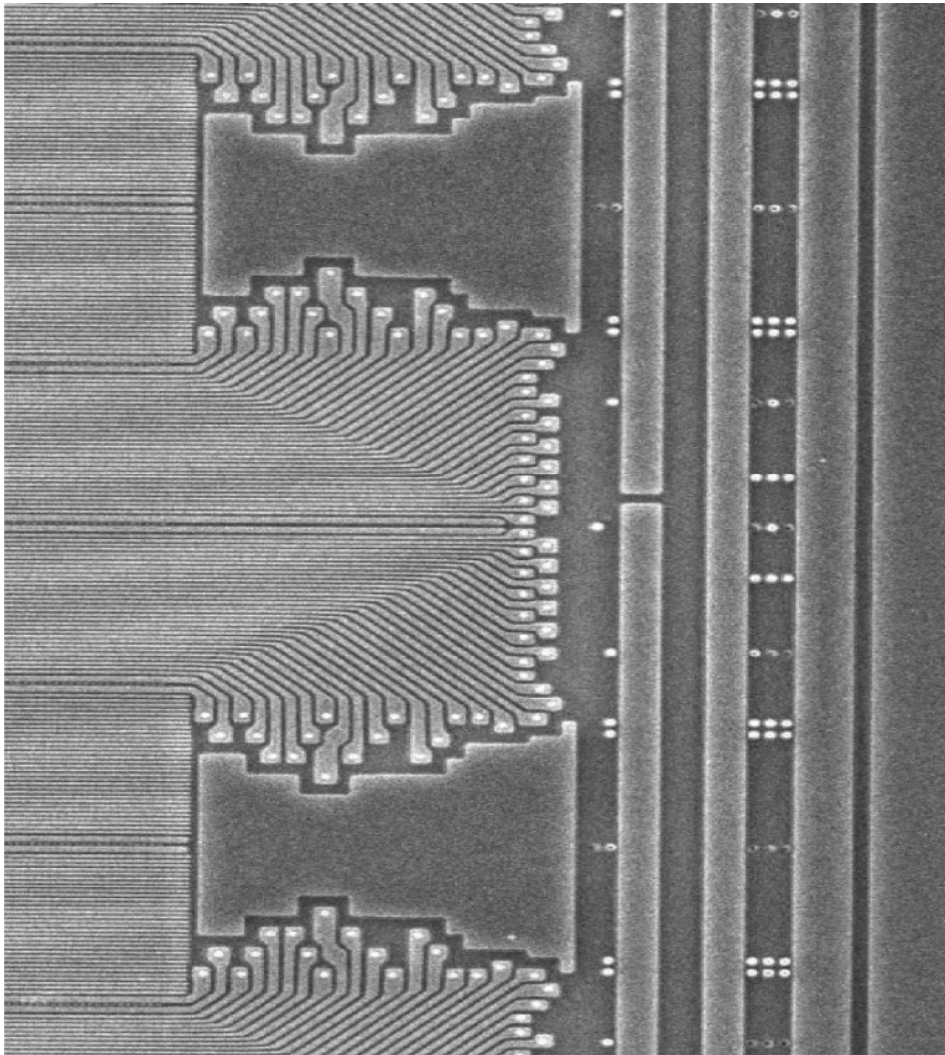
- Client SSDs
 - Q1/15 Client SSD Revenues by Supplier
 - Notebook SSD Forecast
 - Average SSD Capacity
 - Client SSD Pricing
 - Tablet SSD Forecast
 - Client SSD Market by Technology
 - Client SSD Interface Trend

Agenda

- Enterprise SSDs
 - Q1/15 Enterprise SSD Revenues by Supplier
 - Captive Datacenter SSD
 - Enterprise SSD Revenue Forecast
 - Enterprise SSD by Form Factor
 - Enterprise SSD Unit Forecast
 - Aggregate Enterprise \$/GB
 - Enterprise SSD by Technology

Agenda

- Enterprise SSDs
 - Average Enterprise SSD (User) Capacity
 - Enterprise SATA SSD Capacity Trend
 - PCIe SSD Forecast
 - Enterprise \$/GB Forecast
 - Storage-attached SSD Forecast
 - SAS SSD Capacity Trend
- Summary



***Market and Technical
Intelligence for
Semiconductor Memories,
Emerging Memory
Technologies and Solid
State Storage***



www.forward-insights.com