

SSD Insights Q3/12:

NVMe Rising

Gregory Wong, Principal Analyst
greg@forward-insights.com

September 2012



Agenda

- Q3/12 vs. Q2/12 Forecast
- Computing SSD Revenue Forecast
- Computing SSD Unit Forecast
- Client SSDs
 - Hybrid Hard Drive Adoption
 - PC Flash Cache/Hybrid Dual Drive
 - Ultra-thin Notebook Storage
 - Notebook SSD Forecast

Agenda

- Client SSDs
 - Average SSD Capacity
 - SSD Channel Pricing
 - Client SSD Pricing
 - Tablet SSD Forecast
 - TLC SSD Price Trend
 - TLC SSD Forecast
 - Client SSD Interface Trend

Agenda

- Enterprise SSDs
 - Captive Datacenter SSD
 - Enterprise SSD Revenue Forecast
 - Enterprise SSD Unit Forecast
 - Aggregate Enterprise \$/GB
 - Enterprise SSD by Technology
 - Average Enterprise SSD (User) Capacity
 - Server-attached SSD Forecast
 - Storage-attached SSD Forecast
- Summary

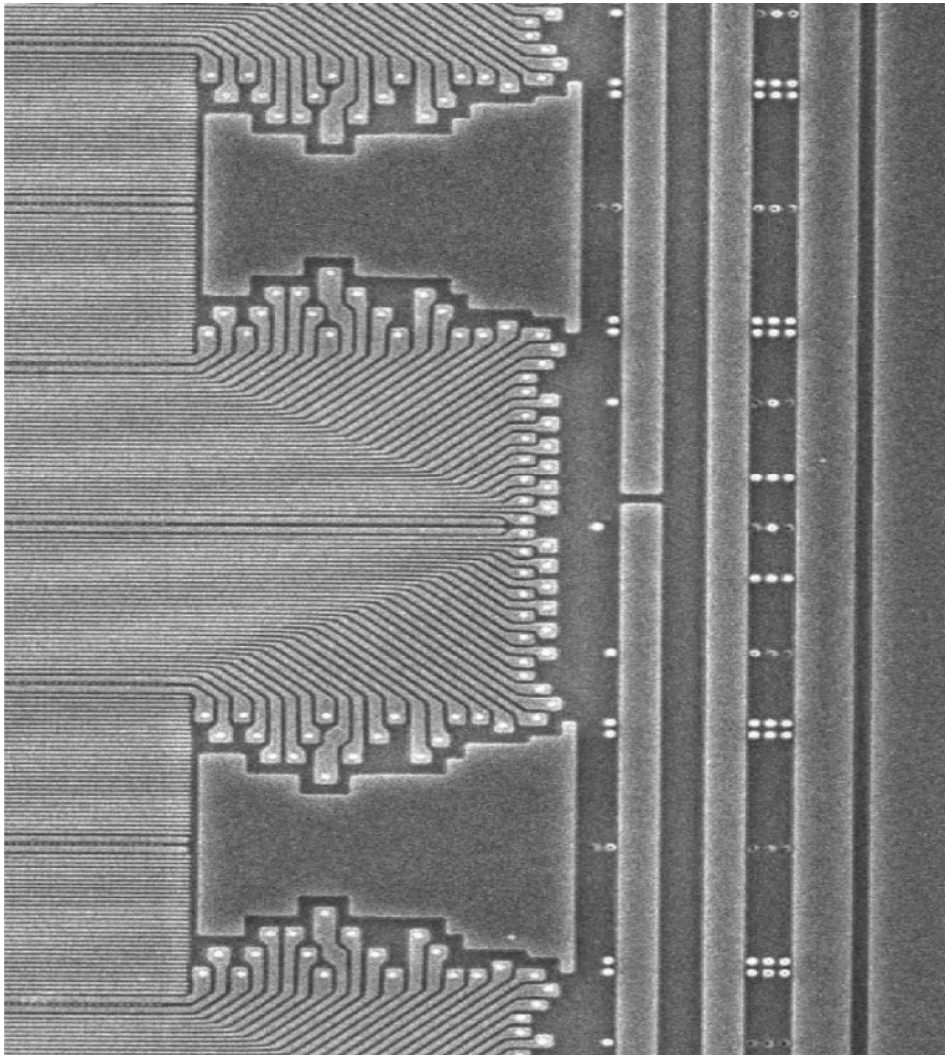
Q3/12 vs. Q2/12 Forecast

Client

- ↓ PC unit forecast
- ↓ LCPC unit forecast
- ↓ ultra-thin notebook forecast
- ↓ PC Flash cache units
- ↓ HDD units
- ↓ HDD units
- ↓ Channel SSD units
- ↑ Tablet units

Enterprise

- ↓ SATA SSDs
- ↓ PCIe SSDs
- ↓ SAS SSDs
- ↓ Captive datacenter SSDs



***Market and Technical
Intelligence for
Semiconductor Memories,
Emerging Memory
Technologies and Solid
State Storage***

FORWARD

INSIGHTS
Forward Thinking

www.forward-insights.com